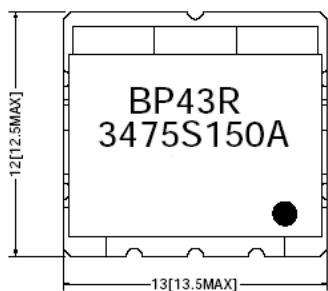


RF FILTER SPECIFICATION

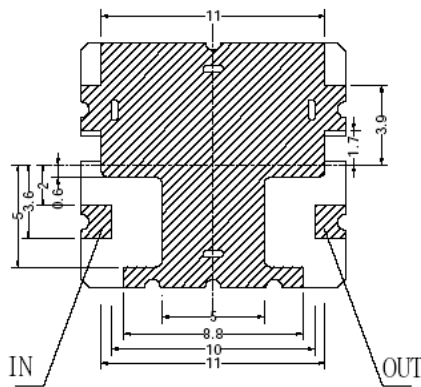
Part No. BP43R3475S150A

Electrical Specifications			
Item	Parameter	CMI Specification	Unit
1	Center Frequency [fo]	3475	MHz
2	Bandwidth (BW)	150	MHz
3	Insertion Loss at fo	2.0 max.	dB
4	Ripple in BW	1.0 max.	dB
5	V S W R in BW	2.0 max.	-
6	In/Out Impedance	50	Ω
7	Attenuation [Relative value]	25 min. at 3100 MHz 25 min. at 3900 - 4500 MHz	dBc

TOP VIEW



BOTTOM VIEW



TOLERANCE : .X : ± 0.3
.XX : ± 0.15

UNIT: mm

● INPUT PORT

CALL OUR SALES DEPARTMENT FOR MORE INFORMATION OR VARIATIONS OF THIS PRODUCT.

Corry Micronics, Inc. One Plastics Rd. - Corry, PA 16407
(814) 664-7728 Fax (814) 664-4582 www.cormic.com

Corry Micronics Inc. herein referred to CMI, believes this information to be accurate, but makes no warranties, expressed or implied as to the accuracy of this document. CMI assumes no liability for any injury, loss, damage, direct or consequential arising from the use of our products. User assumes all risk whatsoever in connection with its intended use. CMI also reserves the right to change this document without notice.