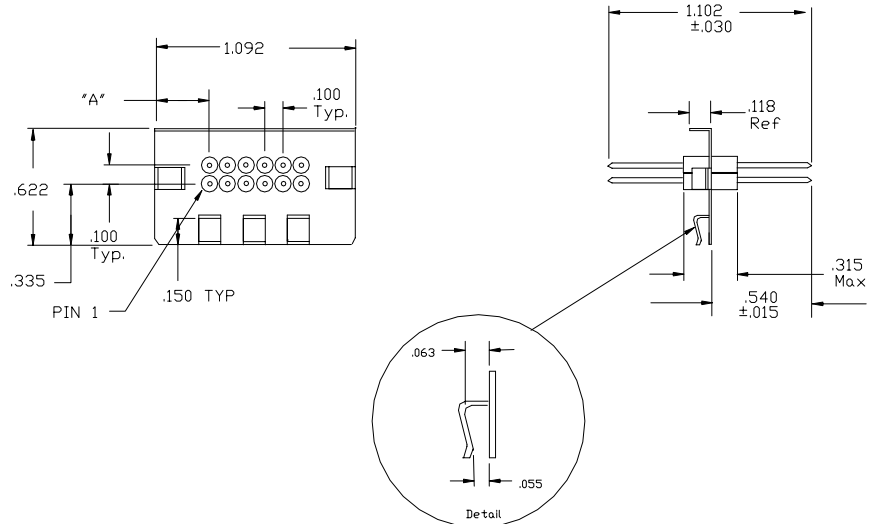


FP06 Style Filter Plate



Materials:

Plate: Copper Alloy, Matte Tin Plated

Leads: Copper Alloy, .025" ± .002" DIA, Gold Plated

Working Voltage: 100 VDC

Max. Current: 5 Amps DC

Insulation Resistance @ 25 °C: 10 GΩ Min.

Operating Temperature: -55 °C - +125 °C

No. of Filtered Lines Per Row	"A"
1 or 2	.496
3 or 4	.396
5 or 6	.296

Filtering Options: See Filter Options Chart

Lead Configurations: See Lead Options Chart

Ordering Information:

Style	# of Rows	# of Filters Per Row	Lead Configuration	Filter Design
FP06 -	2 (1 or 2)	06 (01 thru 06)	- S (S,L,R, or B)	- Q (See Filter Options)

Example: Part Number: FP06 -206-SQ
Description: FP06 Style Plate, 2 rows of 6, Straight Leads, 1000 pF "Pi" Circuit.

Unless otherwise specified, single row designs utilize the bottom row.
For custom lead configurations consult the factory.

CALL OUR SALES DEPARTMENT FOR MORE INFORMATION OR VARIATIONS OF THIS PRODUCT.

Corry Micronics, Inc. One Plastics Rd. - Corry, PA 16407 (814) 664-7728 Fax (814) 664-4582

Corry Micronics Inc. herein referred to CMI, believes this information to be accurate, but makes no warranties, expressed or implied as to the accuracy of this document. CMI assumes no liability for any injury, loss, damage, direct or consequential arising from the use of our products. User assumes all risk whatsoever in connection with its intended use. CMI also reserves the right to change this document without notice.