

## Montagearten; Bauhöhe 6.3 mm

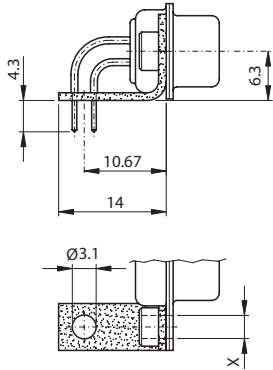
Für Lötstift 90°, 9.4 mm (YC)



## Assemblies; mounting height 6.3 mm

For solder pin 90°, 9.4 mm (YC)

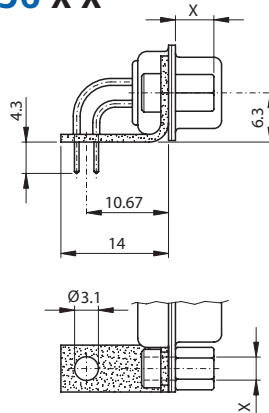
### M56 x



Metallwinkel / Metal bracket

<b>M56 D3</b>	Niete / rivet	Ø 3.1 mm
<b>M56 UN</b>	Niete / back nut	UNC4-40
<b>M56 M3</b>	Niete / back nut	M3

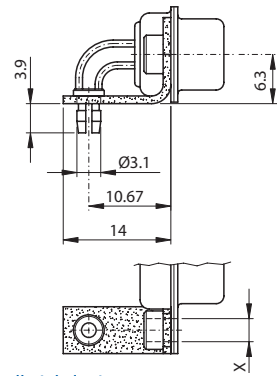
### M56 x x



Metallwinkel / Metal bracket

<b>M56 UN B5</b>	Niete / back nut	UNC4-40
	Schraube / screw	5 mm
<b>M56 UN B6</b>	Niete / back nut	UNC4-40
	Schraube / screw	6 mm
<b>M56 M3 B5</b>	Niete / back nut	M3
	Schraube / screw	5 mm
<b>M56 M3 B6</b>	Niete / back nut	M3
	Schraube / screw	6 mm

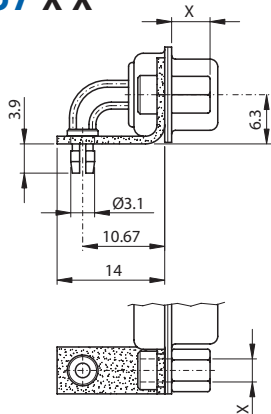
### M57 x



Metallwinkel mit P.o.F.  
Metal bracket with P.o.F.

<b>M57 D3</b>	Niete / rivet	Ø 3.1 mm
<b>M57 UN</b>	Niete / back nut	UNC4-40
<b>M57 M3</b>	Niete / back nut	M3

### M57 x x



Metallwinkel mit P.o.F.  
Metal bracket with P.o.F.

<b>M57 UN B5</b>	Niete / back nut	UNC4-40
	Schraube / screw	5 mm
<b>M57 UN B6</b>	Niete / back nut	UNC4-40
	Schraube / screw	6 mm
<b>M57 M3 B5</b>	Niete / back nut	M3
	Schraube / screw	5 mm
<b>M57 M3 B6</b>	Niete / back nut	M3
	Schraube / screw	6 mm

