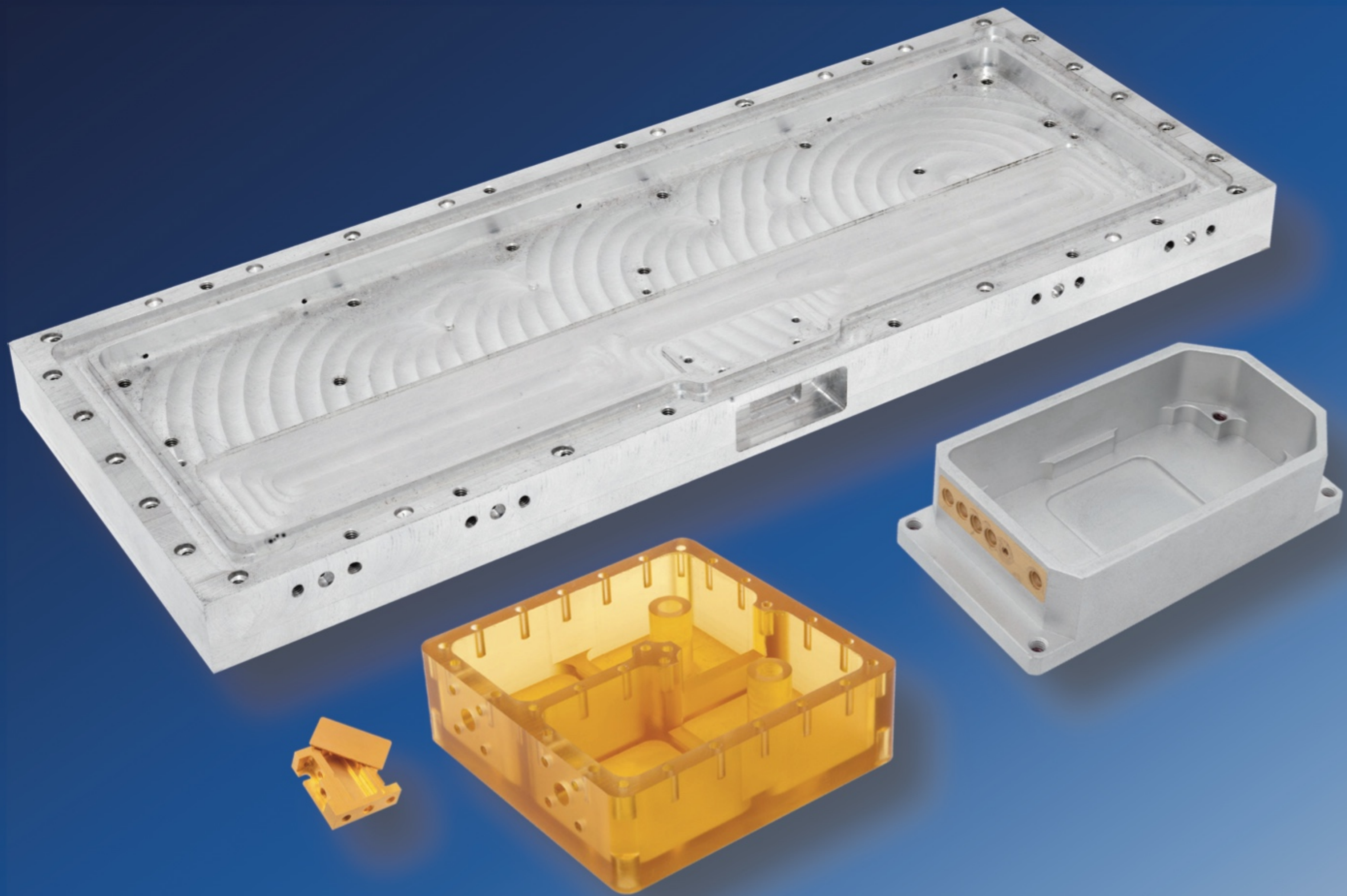




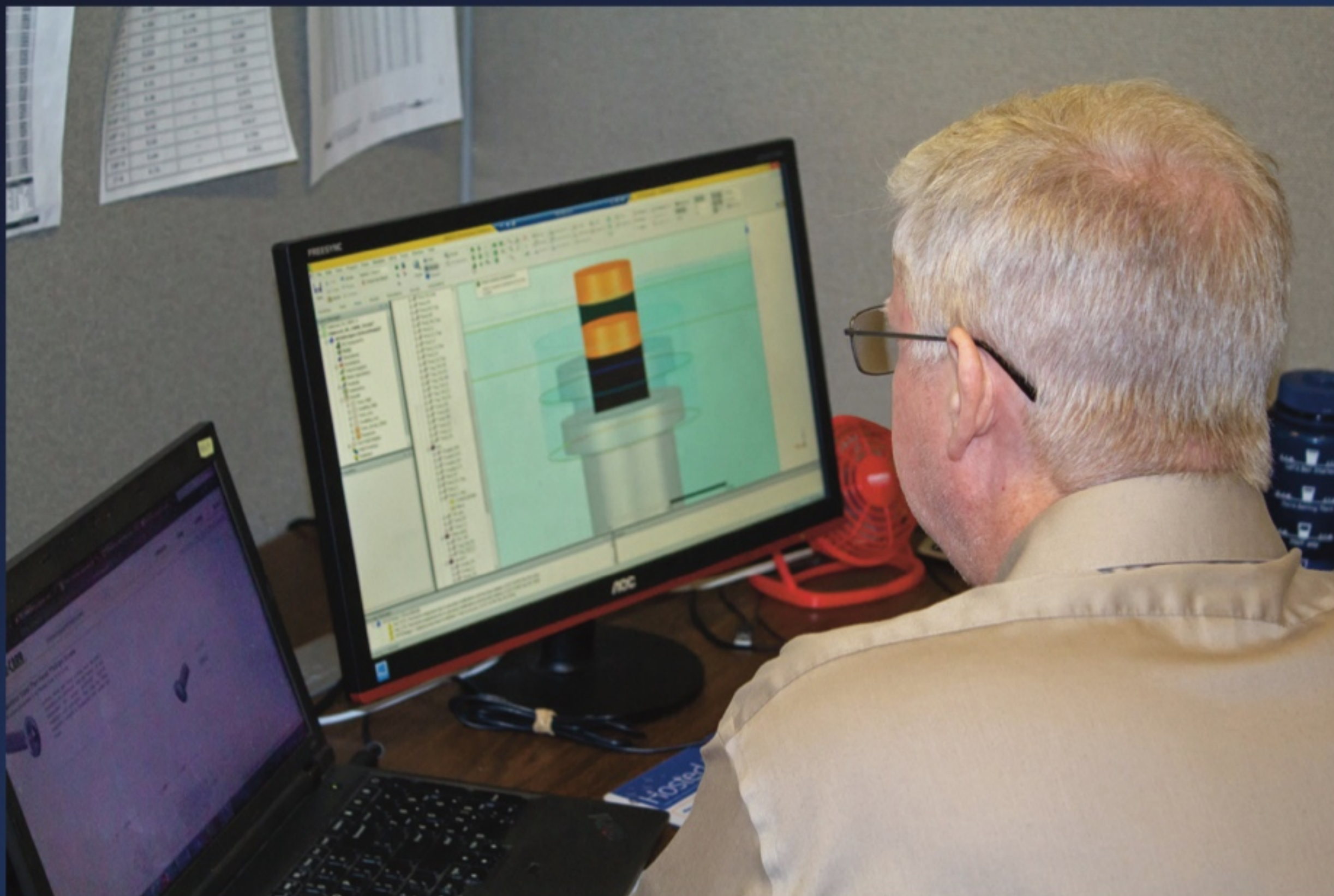
CORRY MICRONICS, INC

CONTRACT SERVICES



- *Specialist in RF and Microwave Design Engineering*
- *ITAR Registered*
- *CNC Machining Center*
- *Feedthru Installation*
- *Hermetic Testing*
- *System Testing*
- *Electro-Mechanical Assembly*
- *Wire Bonding*
- *RF and Electrical Performance testing*

DESIGN SERVICES



- *Engineering specialist from Concept, to Prototype and Full production*
- *Schematic capture*
- *PCB Layout and route*
- *Full RF simulations using Ansys software*
- *Small batch prototyping*
- *Production on or off shore*
 - *All facilities are ISO9001:2015*
- *Wire Bonding*



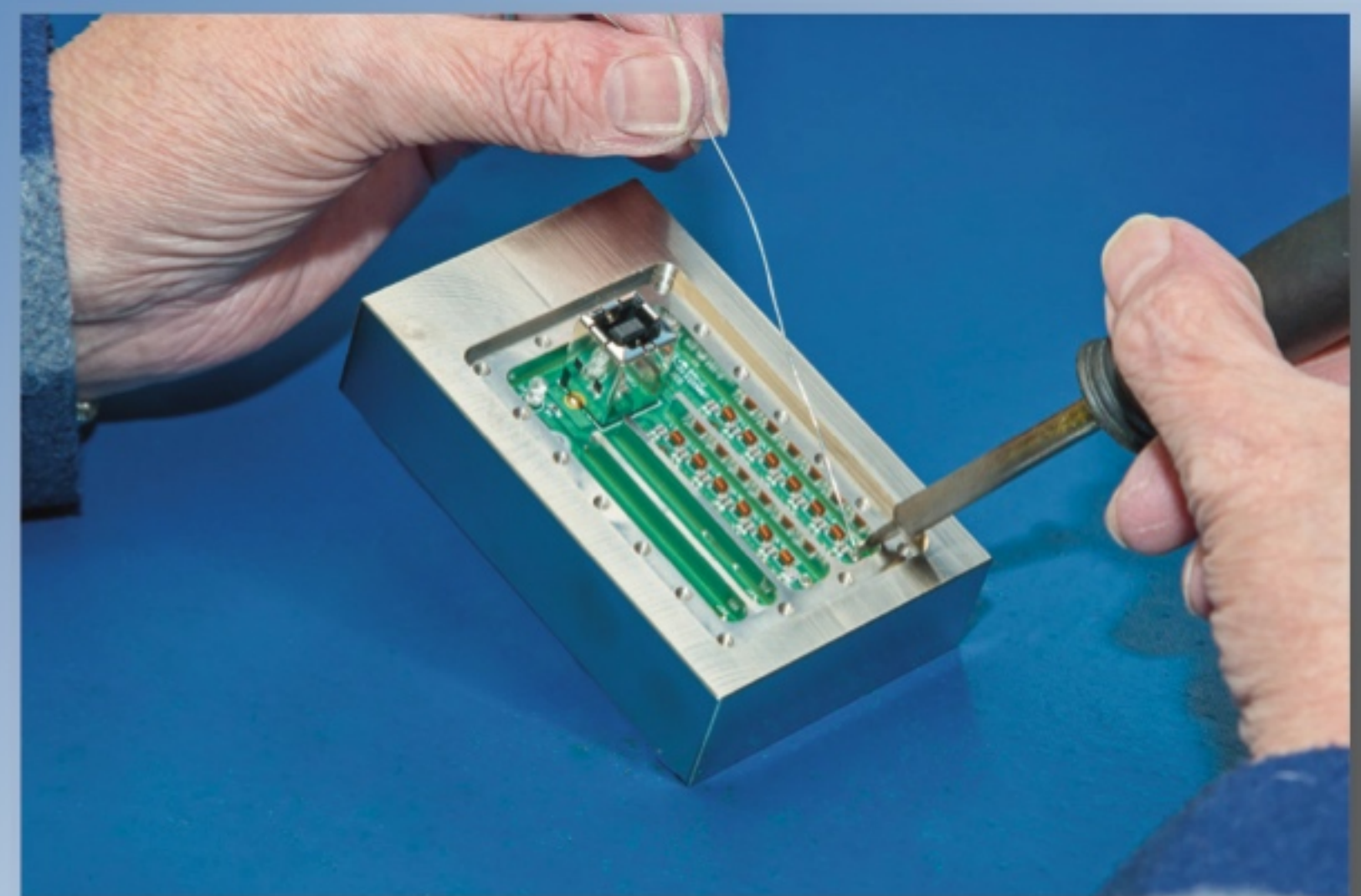
CNC MACHINING, ASSEMBLY AND TEST CAPABILITIES



- *Machined housings from Aluminum, Stainless Steel, Brass, Copper and plastics*
- *Experienced machining precision parts for the RF industry*
- *Various plating options such as Electroless Nickel, Gold, Silver and White Bronze*
- *Testing Services*
 - *Thermal cycling*
 - *Hermeticity testing to 1×10^{-8} cc/atm (He)*
 - *Life testing*
 - *Electrical and mechanical certification*
 - *First Article Inspections*
- *Feedthru installation in leaded solder SN-63 (Military), ROHS compliant (SN 96) and Gold-Tin (80/20)*



Feedthru Installations



Hand Assembly & soldering

FULL-TURNKEY CONTRACTING SERVICES

By a name you can trust



CORRY MICRONICS, INC

Why consider doing business with CMI?

No-Cost Project evaluation and Quote service
Over 40 years of industry experience
State of the art engineering and development center



Corry Micronics, Inc. 761 Commonwealth Drive Warrendale PA 15086
Sales: CJ McBride: 724-940-7556 ext138, e-mail: cmcbride@cormic.com