

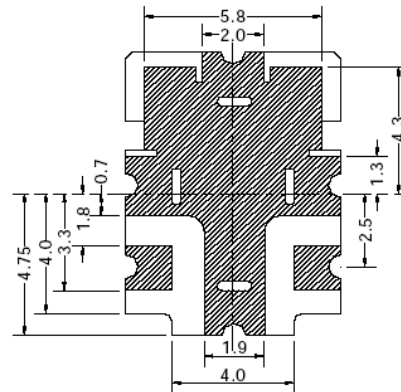
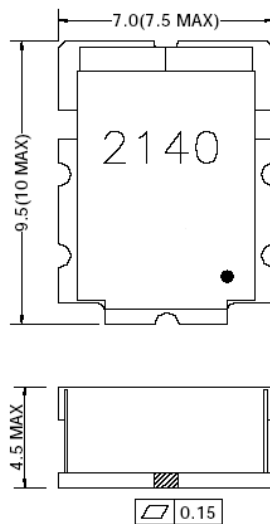
RF FILTER SPECIFICATION

Part No. BP32R2140S200A

Electrical Specifications				
Item	Parameter	General Specification	CMI Specification	Unit
1	Center Frequency [fo]	2140	2140	MHz
2	Pass Bandwidth [BW]	Fo ± 100	Fo ± 100	MHz
3	Insertion Loss in BW		2.0 max.	dB
4	Ripple in (2110 - 2170 MHz)	0.2 max.	0.2 max.	dB
5	V.S.W.R		1.5 max.	Ratio
6	In/Out Impedance		50	ΩΩ
7	2 nd Harmonic [Relative Value]	30 - 40 min.	min.	dBc
	2 nd Harmonic [Relative Value]	30 - 40 min.	min.	

TOP VIEW

BOTTOM VIEW



TOLERANCE : .X : ± 0.3
: .XX : ± 0.15

UNIT: mm
● : IN

CALL OUR SALES DEPARTMENT FOR MORE INFORMATION OR VARIATIONS OF THIS PRODUCT.

**Corry Micronics, Inc. One Plastics Rd. - Corry, PA 16407
(814) 664-7728 Fax (814) 664-4582 www.cormic.com**

Corry Micronics Inc. herein referred to CMI, believes this information to be accurate, but makes no warranties, expressed or implied as to the accuracy of this document. CMI assumes no liability for any injury, loss, damage, direct or consequential arising from the use of our products. User assumes all risk whatsoever in connection with it's intended use. CMI also reserves the right to change this document without notice.