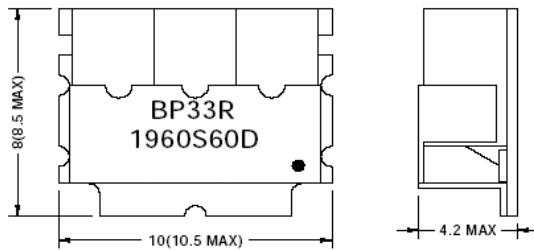


### RF FILTER SPECIFICATION

Part No. BP33R1960S60D

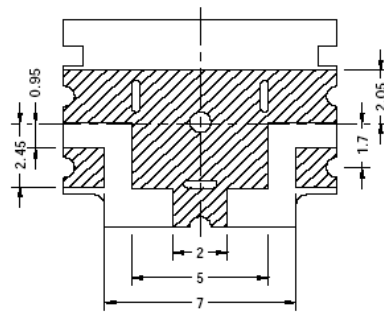
Electrical Specifications			
Item	Parameter	CMI Specification	Unit
1	Center Frequency	1960	MHz
2	Bandwidth (BW)	60	MHz
3	Insertion loss in BW	2.2 max.	dB
4	Ripple in BW	1.0 max.	dB
5	V S W R in BW	2.0 max.	-
6	In/Out Impedance	50	$\Omega$
7	Attenuation [Absolute Value]	15 min. at fo $\pm$ 100 MHz	dB
		48 min. at fo $\pm$ 400 MHz	dB

TOP VIEW



TOLERANCE : .X :  $\pm$  0.3  
 .XX :  $\pm$  0.15  
 DIMENSION UNIT: mm  
 ● : IN

BOTTOM VIEW



**CALL OUR SALES DEPARTMENT FOR MORE INFORMATION OR VARIATIONS OF THIS PRODUCT.**

**Corry Micronics, Inc. One Plastics Rd. - Corry, PA 16407**  
**(814) 664-7728 Fax (814) 664-4582 [www.cormic.com](http://www.cormic.com)**

Corry Micronics Inc. herein referred to CMI, believes this information to be accurate, but makes no warranties, expressed or implied as to the accuracy of this document. CMI assumes no liability for any injury, loss, damage, direct or consequential arising from the use of our products. User assumes all risk whatsoever in connection with it's intended use. CMI also reserves the right to change this document without notice.