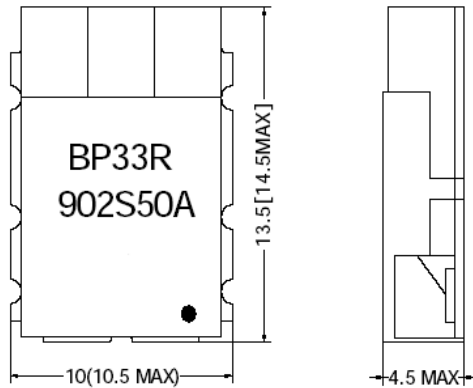


RF FILTER SPECIFICATION

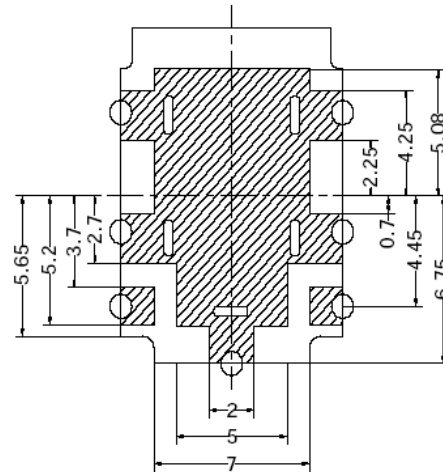
Part No. BP33R902S50A

Electrical Specifications			
Item	Parameter	General Specification	
1	Center Frequency	902.5 MHz	
2	Bandwidth (BW)	fo ±25 MHz	
3	Insertion loss in BW	2.6 dB max.	
4	Ripple in BW	1.0 dB max.	
5	VSWR	2.0 max.	
6	Input power	1 watt max.	
7	Attenuation	Frequency	Specification
	□ Absolute Value	Fo ± 120 MHz	20 dB min.

TOP VIEW



BOTTOM VIEW



TOLERANCE : .X ±0.3
.XX ±0.15

DIMENSION UNIT : mm

▨ COPPER AREA

● INPUT PORT

CALL OUR SALES DEPARTMENT FOR MORE INFORMATION OR VARIATIONS OF THIS PRODUCT.

Corry Micronics, Inc. One Plastics Rd. - Corry, PA 16407
(814) 664-7728 Fax (814) 664-4582 www.cormic.com

Corry Micronics Inc. herein referred to CMI, believes this information to be accurate, but makes no warranties, expressed or implied as to the accuracy of this document. CMI assumes no liability for any injury, loss, damage, direct or consequential arising from the use of our products. User assumes all risk whatsoever in connection with its intended use. CMI also reserves the right to change this document without notice.