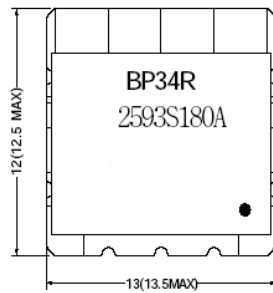


### RF FILTER SPECIFICATION

Part No. BP34R2593S180A

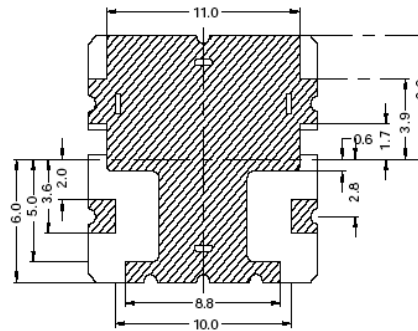
Electrical Specifications			
Item	Parameter	General Specification	
1	Center Frequency	2593 MHz	
2	Bandwidth (BW)	fo ±90 MHz	
3	Insertion loss in BW	1.8 dB max.	
4	Ripple in BW	1.0 dB max.	
5	VSWR	1.5 max.	
6	Input power	1 watt max.	
7	Attenuation □ Absolute Value	Frequency	Specification
		1800 MHz	35 dB min.
		3300 MHz	35 dB min.

TOP VIEW



TOLERANCE UNLESS OTHERWISE  
SPECIFIED :  $\pm 0.3$   
UNIT: mm  
● : IN

BOTTOM VIEW



**CALL OUR SALES DEPARTMENT FOR MORE INFORMATION OR VARIATIONS OF THIS PRODUCT.**

**Corry Micronics, Inc. One Plastics Rd. - Corry, PA 16407**  
**(814) 664-7728 Fax (814) 664-4582 [www.cormic.com](http://www.cormic.com)**

Corry Micronics Inc. herein referred to CMI, believes this information to be accurate, but makes no warranties, expressed or implied as to the accuracy of this document. CMI assumes no liability for any injury, loss, damage, direct or consequential arising from the use of our products. User assumes all risk whatsoever in connection with it's intended use. CMI also reserves the right to change this document without notice.