

RFMW Filters and switched-filter solutions engineered for the most challenging applications



Trusted by Industry Leaders

Quantic Corry is a leading supplier of RF and Microwave Components and Subsystems and has been manufacturing EMI/RFI Filters for over 50 years. Specializing in high power and broadband solutions, Quantic Corry is a critical supplier and partner to major companies serving the aerospace, defense, medical, communications, and specialty test industries. Since 1970, Quantic Corry has become a key supplier and service provider for those needing a broad range of capabilities, expertise, design flexibility and customization. Driven by the unique capabilities of each customer, we take a proactive approach to solve problems and create solutions within budgets and timelines. Our experience and innovation, coupled with the expertise to engineer and design individual and RF microwave subsystems, makes Quantic Corry a reliable partner for design engineers and product managers.

Experts in RFMW filtering, Quantic Corry works with your RF engineering teams to deliver the technology that meets the needs of the application, whether straightforward or complex.

Featured Products



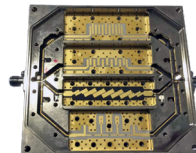
RFMW Filters

- Existing and custom designs from DC to 60GHz utilizing every known filter technology.



Switch Matrices

- We offer the most customizable switch matrix in the industry. Our design team works directly with you and relies on existing and custom architecture to provide a full turn-key switching system.



Switch Filter Banks

- Custom designs from DC to 44GHz specializing in broadband and ultra-fast switching speeds.



RF Switches

- Focusing on high power and fast switching, we are an industry leader in providing mission critical pin diode switches.



Diplexers and Multiplexers

- By using different and various filter types, we separate ourselves from our competition. We have multiplexed over 10 channels onto a common port. At Quantic Corry, we have the ability to develop custom filter designs optimized to each customer's requirements. We design with the optimal architecture and filter elements to meet the most stringent insertion loss specifications.



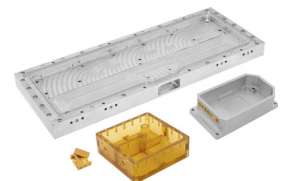
RF Power Amplifiers

- Whether you are searching for High Power RF Amplifiers for MIL-STD 1553 applications, or need components for a wireless cellular infrastructure, Quantic Corry can meet your needs. These amplifiers also have an array of built-in safeguards including Automatic Level Control to regulate output power levels specifications.



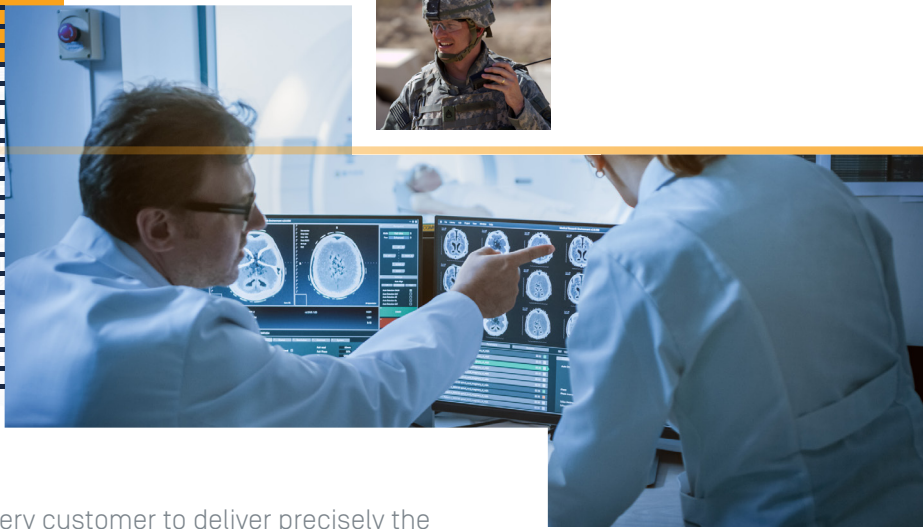
EMI Filters and Filtered Connectors

- Our ceramic based EMI/RFI filters and filtered connectors were our founding products and the bedrock of our company. We have been providing these filters for over 50 years to defense, medical, and commercial customers.



Machined Housings

- We have a state of the art machine shop that boasts industry-leading CNC capabilities. Quantic Corry has been focusing on RFMW machined housings for over 20 years and understands the complexity and quality required to meet our customers' most challenging specifications.



Quantic Corry partners with every customer to deliver precisely the correct solution for each specific application challenge, with an array of services and capabilities that span the entire product lifecycle, from design to delivery.

Design

Modern microwave systems are increasingly complex and highly sensitive. The components that make them up require sophistication and ingenuity to match. At Quantic Corry, application of the most powerful and up-to-date design simulation and modeling software ensures effective and efficient results even prior to hardware prototyping. Because we design at the component level and are vertically integrated, we can be very reactive to changes in specification and demand and be more reactive to customers' needs.



Manufacturing

In addition to our fully equipped 20,000 square foot facility in Corry, PA, we utilize our RFMW design center in Warrendale, PA, to maximize design capabilities and be more reactive to time-critical applications. Our state of the art machine shop gives us the ability to reduce prototyping delivery immensely allowing us to meet customers' timelines when competitors simply cannot.



Value Added Integration

Because we understand RFMW applications at the component level, we understand the complexity of block diagram architecture and component integration. When you combine this knowledge along with our ability to design and fabricate an entire package, Quantic Corry can offer the customer the design service to fully integrate a design and assemble, test, and manufacture a full turn-key system.

