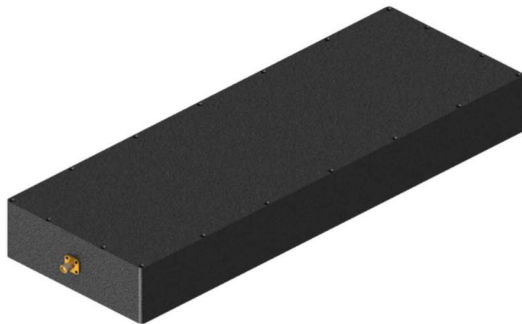


Product Specification

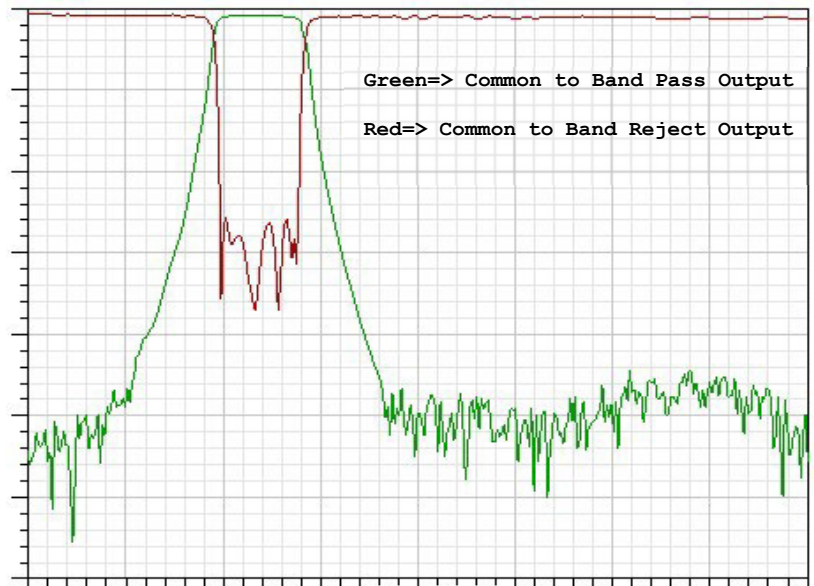
CMIBFNF-4400-5000 Hybrid Band Pass Band Reject Diplexer

Electrical Specifications

Parameter	Specification	
	Band Pass	Band Reject
Input Frequency Range	2 ~ 8 GHz	
Frequency Range	4400 ~ 5000 MHz	4400 ~ 5000 MHz
Insertion Loss	2.5 dB Max	2 dB @ 2000 ~ 3900 MHz 4 dB @ 5500 ~ 8000 MHz
Rejection	55 dB @ DC ~ 3900 MHz 55 dB @ 5500 ~ 8000 MHz	40 dB Min
VSWR @ Common Port	2.0:1 Max	
Power	1 Watt	
Connectors	SMA (F)	
Dimensions	See Attached Drawing (All Dimensions are in Inches)	



Transmission Frequency Response



Outline Drawing

