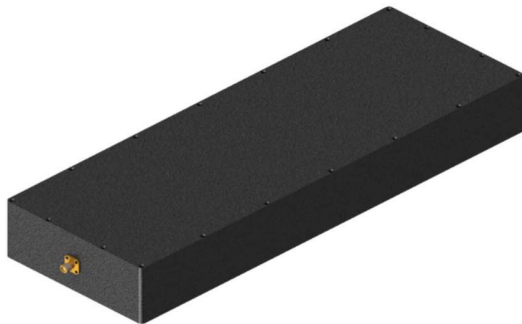


## Product Specification

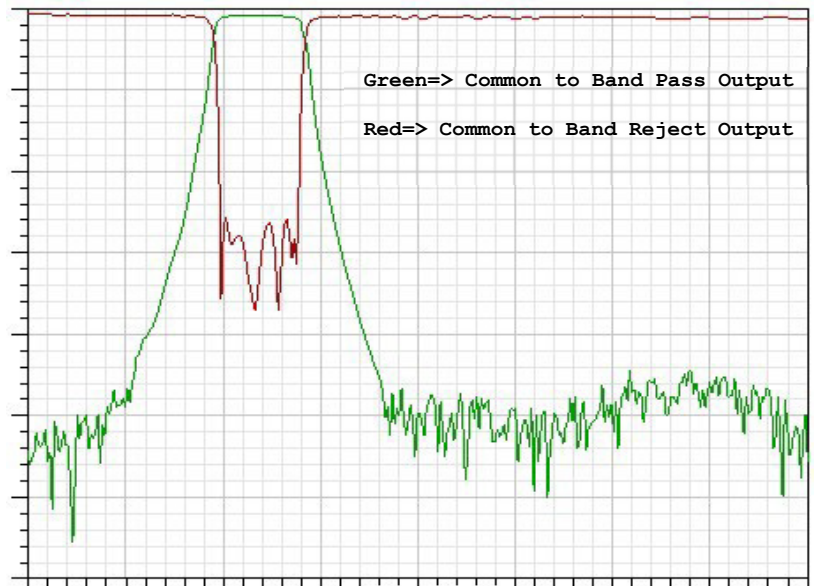
### CMIBFNF-5.0-6.0G Hybrid Band Pass Band Reject Diplexer

#### Electrical Specifications

Parameter	Specification	
	Band Pass	Band Reject
Input Frequency Range	2 ~ 8 GHz	
Frequency Range	5000 ~ 6000MHz	5000 ~ 6000MHz
Insertion Loss	3 dB Max	3 dB @ 2000 ~ 4100 MHz 4 dB @ 7200 ~ 8000 MHz
Rejection	55 dB @ DC ~ 4100 MHz 55 dB @ 7200 ~ 8000 MHz	40 dB Min
VSWR @ Common Port	2.0:1 Max	
Power	1 Watt	
Connectors	SMA (F)	
Dimensions	See Attached Drawing (All Dimensions are in Inches)	



Transmission Frequency Response



# Outline Drawing

